

Tell Me A Dragon

This half term, our focus is the world of dragons. We will explore mythical creatures and poetry.

Our English work will focus on Tell Me a Dragon by Jackie Morris. We will look at myths and legends. We will then write our own stories, explore poetry and create dragon fact files. The children will also look at apostrophes for omission and irregular verbs.

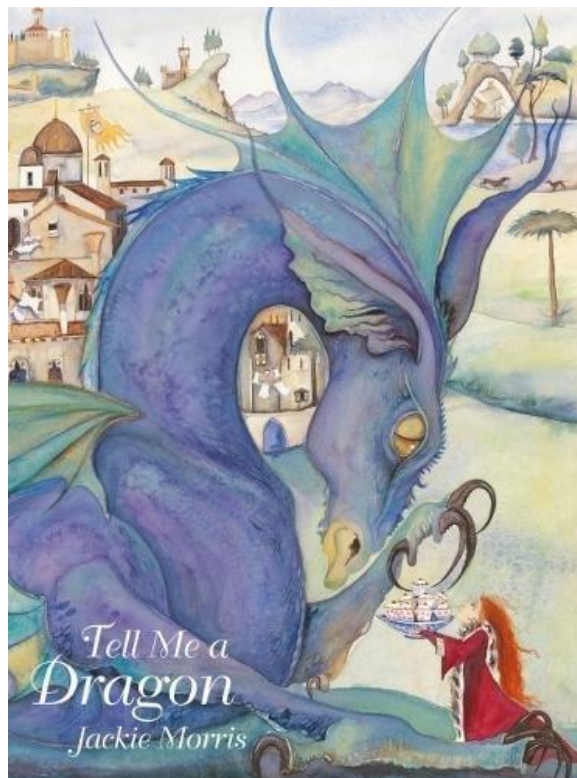
In maths, Wren Class will continue to work on identifying and finding fractions. We will then move on to time.

In science, the children will continue to explore animals, including humans. We will then look at plants.

In computing, we will focus on effective searching and making music.

In history, we will look at fossil hunter, Mary Anning and the significance of her discoveries.

In PE, we will complete the gymnastics unit Points of Contact.



Our art and design focus this term will be printing and the children will also have the chance to work with clay.

Our PSHCE units this half term is Healthy Lifestyles with a focus on growth and medicines.

Mrs Whitley will take the class for RE and music on a Thursday afternoon. Our RE focus will be Judaism. In music, the class will complete the Charanga unit Zootime.

