

Hawk Signposts 5



Amazing Humans

Write an explanation text about some function of the human body (the digestive system, the circulatory system etc.) OR write a short sci-fi story inspired by the human body. For example, what if we had a secret organ that we didn't know about? What if humanity turned into robots? What if everyone's brains stopped working one day and you had to figure out why in order to save the whole human race? Use your imagination!

Success Criteria:

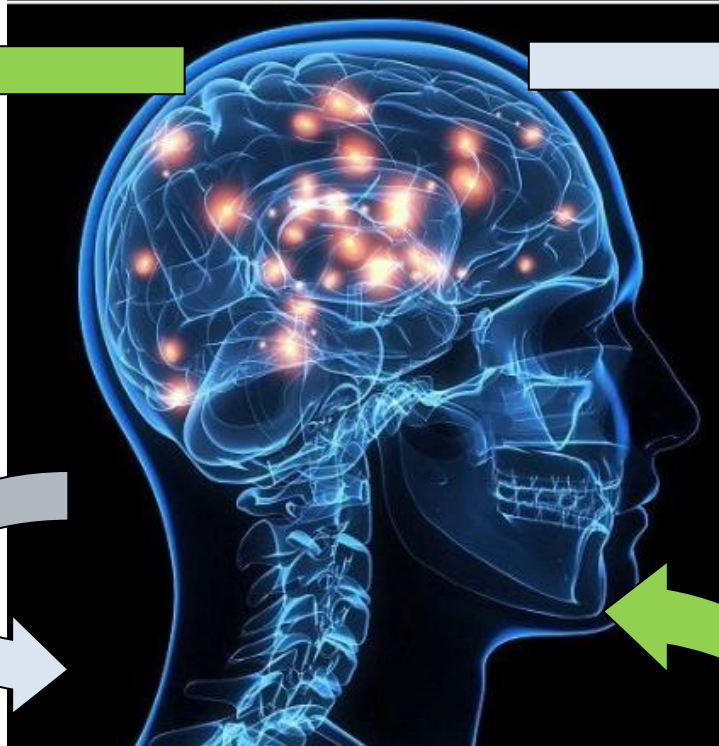
- Ensure your work is all in the correct tense;
- Use a range of sentence lengths and structures;
- Use appropriate vocabulary for the type of writing you have chosen.

The Digestive System

Create a model of the human digestive system. This can be out of materials found around the house (see the next page for some ideas) or can be drawn.

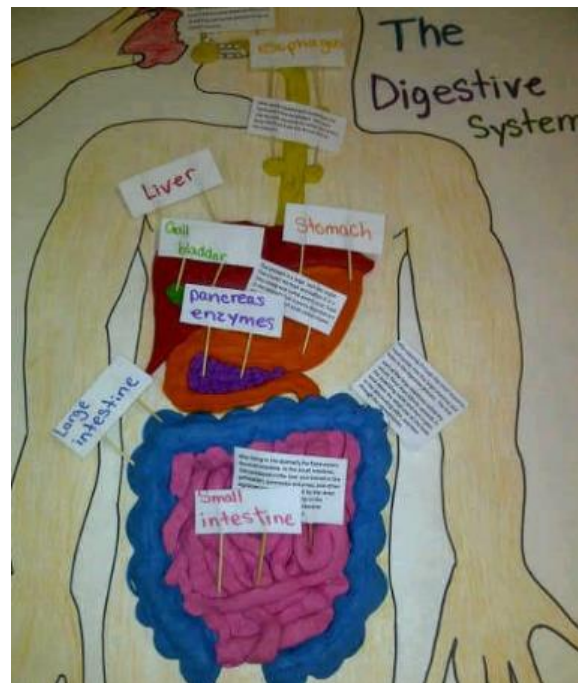
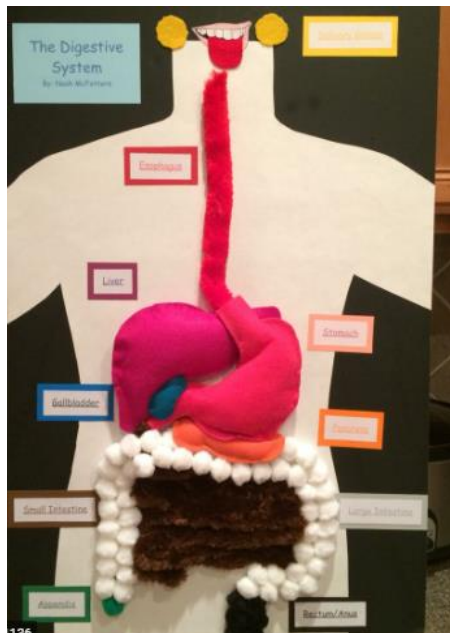
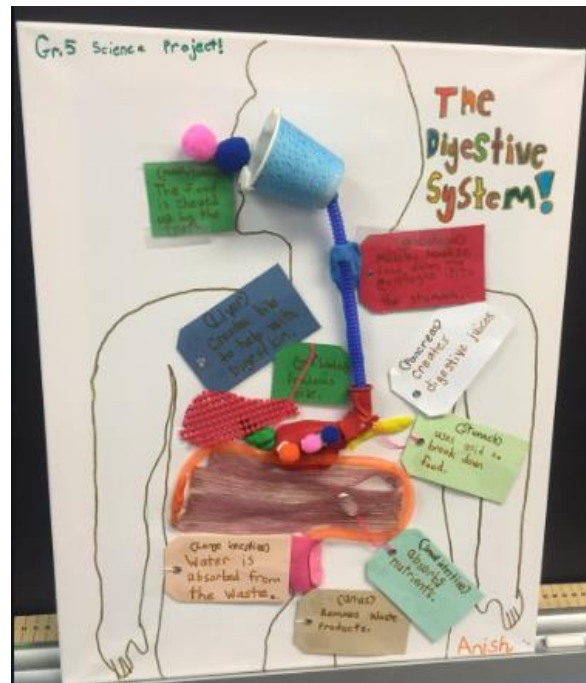
I expect it to be labelled with all of the most important parts: oesophagus, liver, stomach, large intestine, small intestine, gallbladder, pancreas and rectum. Make sure you add information about what each part does.

Send me pictures of your work over email, starz or google classroom. I look forward to seeing what you create!



Maths – See the problems on page 3 which are a mixture of arithmetic questions and problem-solving questions all based on things we've learned in class.

Complete your work on your google classroom account wherever possible and submit this to Miss Hill for marking. You can also send pictures of work you have done on paper, or photos of activities, to nhill@meldreth.cambs.sch.uk or over your starz account.



Arithmetic Questions

1)	$763\,332 + 109\,372 =$
2)	$1248 \div 12 =$
3)	$8^3 =$
4)	$12.4 - 7.28 =$
5)	$30\% \text{ of } 4100 =$
6)	$11.08 \times 5 =$
7)	$457 \times 1000 =$
8)	$15\% \text{ of } 1500 =$
9)	$55 \div (14 - 9) =$
10)	$n + 53 = 107$ $n = ?$
11)	$4/9 \text{ of } 4500 =$
12)	How many seconds are there in 12 minutes?

Reasoning Questions

Calculate the missing digits.

$$\frac{3}{8} \text{ of } 40 = \frac{?}{10} \text{ of } 150$$

$$\frac{1}{5} \text{ of } 315 = \frac{?}{8} \text{ of } 72$$

Use the digit cards to complete the statements.

5 6 3 4

$$\begin{array}{|c|} \hline \square \\ \hline 4 \end{array} > \begin{array}{|c|} \hline 6 \\ \hline \square \end{array} \quad \begin{array}{|c|} \hline \square \\ \hline 4 \end{array} < \begin{array}{|c|} \hline 6 \\ \hline \square \end{array}$$

Aisha goes shopping with £20

She spends £4 on a book and buys 5 magazines each costing £3

Tick the calculations that show how much money she has left in pounds.

$$20 - 4 + 5 \times 3$$

$$20 - (4 + 5) \times 3$$

$$20 - (4 + 5 \times 3)$$

$$20 - 4 - 5 \times 3$$

$$20 - 5 \times 3 + 4$$

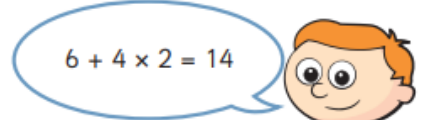
$$20 - (5 \times 3 + 4)$$

Dexter and Ron are completing the same calculation.



$$6 + 4 \times 2 = 20$$

Dexter



$$6 + 4 \times 2 = 14$$

Ron

Who is correct? _____

Explain your answer.

Annie has reflected the shape in the y-axis.

Is her drawing correct?

If not explain why.

